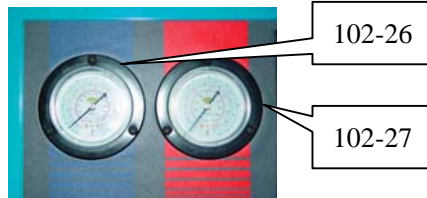
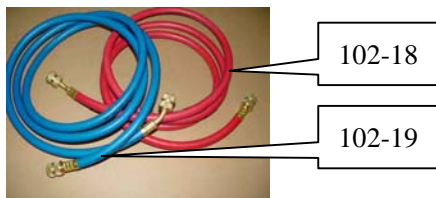
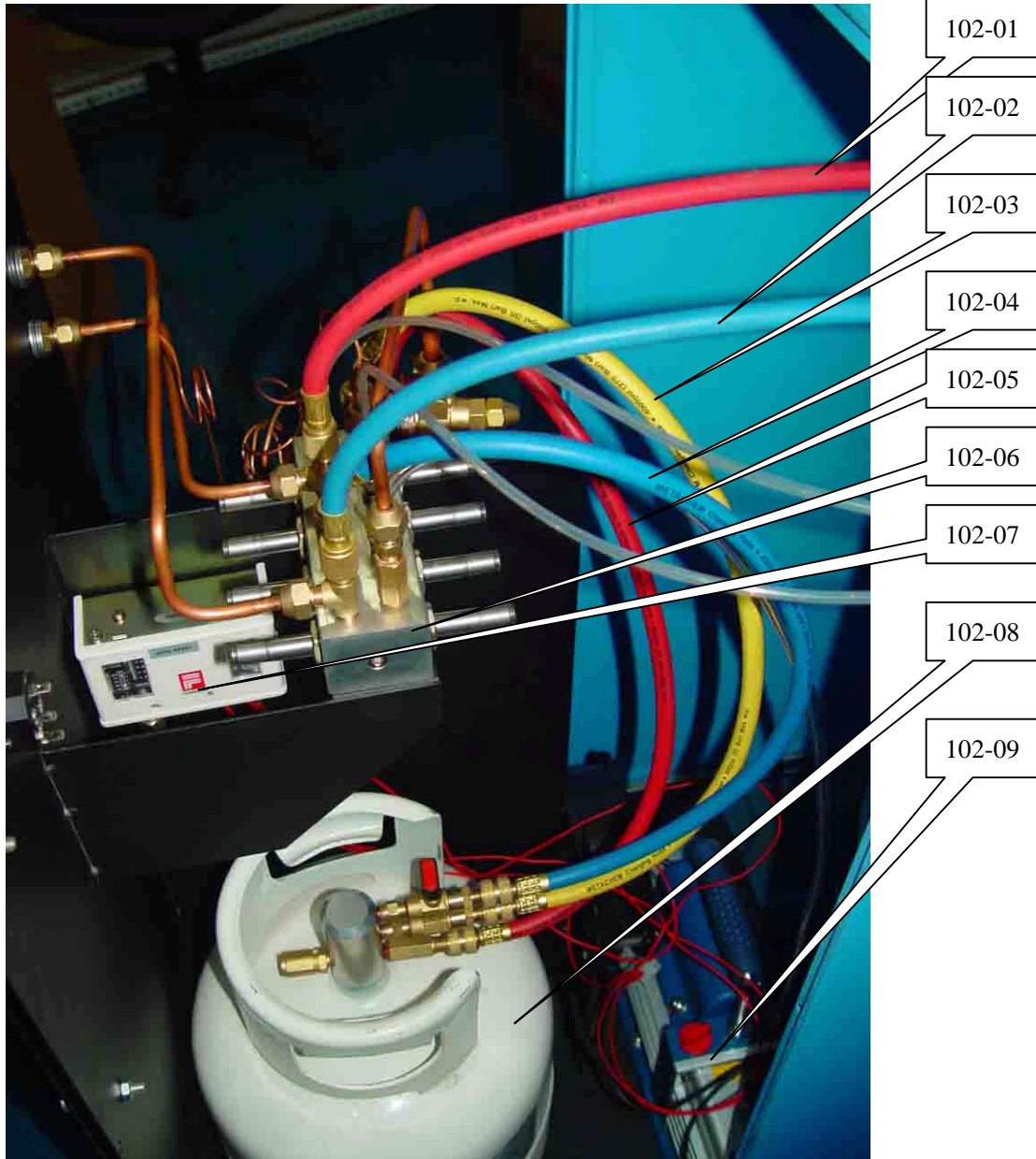


Parts and Consumables for OC102





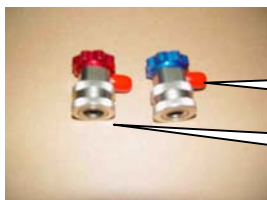
102-10

102-11

102-12

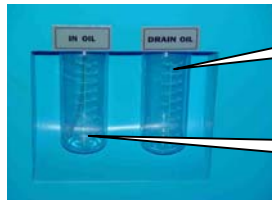
102-30

102-14



102-15

102-16



102-24

102-25

| Part No. | Name | Specification | Quantity |
|----------------------------|---|--|----------|
| 102-01 102-02 | Hose for High Pressure Gauge Hose for Low Pressure Gauge |  | 1 |
| 102-03 102-04 102-05 | Gas Removal Hose Charge Hose Recovery Hose |  | 1 |
| 102-06 | Flow Junction |  | 1 |
| 102-07 | Pressure Controller |  | 1 |
| 102-08 | Work Tank |  | 1 |
| 102-09 | Vacuum Pump |  | 1 |
| 102-10 | Constant Pressure Expansion Valve |  | 1 |
| 102-11 | Combination Part of Heat Exchanger and Oil Separator |  | 1 |
| 102-12 | Fan |  | 1 |
| 102-14 | Compressor |  | 1 |
| 102-15 102-16 | Low Pressure Quick Coupler High Pressure Quick Coupler |  | 1 |
| 102-17 | Combination Part of Constant Pressure Expansion Valve |  | 1 |

| | | | |
|------------------|---|--|---|
| 102-18 102-19 | High Pressure Hose Low Pressure Hose |  | 1 |
| 102-20 | Combination Part of Solenoid Valve |  | 1 |
| 102-21 | Key Board |  | 1 |
| 102-22 | Mainboard |  | 1 |
| 102-23 | Display Screen |  | 1 |
| 102-24 102-25 | Drain Oil Bottle In Oil Bottle |  | 1 |
| 102-26 102-27 | Low Pressure Gauge High Pressure Gauge |  | 1 |
| 102-28 | Electricity Socket |  | 1 |
| 102-29 | Vacuum Pump Oil (Consumable) |  | 1 |
| 102-30 | Filter-Drier (Consumable) |  | 1 |